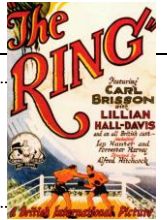


# ELCV – Escola Livre de Cinema e Vídeo de Santo André – Alfred Hitchcock



1920  
1925  
1930  
1935  
1940  
1945  
1950  
1955  
1960  
1965  
1970  
1975  
1980

INGLATERRA

Number 13 (1922) (unfinished)



The Pleasure Garden (1925)  
The Mountain Eagle (1926)

1 = **The Ring (1927)**  
Champagne (1928)  
2 = **Blackmail (1929)**

The Lodger (1927) Downhill (1927)  
The Farmer's Wife (1928) Easy Virtue (1928)  
The Manxman (1929)

3 = **Number Seventeen (1932)**

An Elastic Affair (1930)

Juno and the Paycock (1930) Murder! (1930)  
Rich and Strange (1931) Mary (1931)

Waltzes from Vienna (1934)

The Man Who Knew Too Much (1934)

4 = **The 39 Steps (1935)**  
Secret Agent (1936)  
Young and Innocent (1937)  
The Lady Vanishes (1938)  
Jamaica Inn (1939)



Sabotage (1936)



5 = **Rebecca (1940)**  
Mr. & Mrs. Smith (1941)  
6 = **Saboteur (1942)**  
7 = **Shadow of a Doubt (1943)**



Foreign Correspondent (1940)

Bon Voyage (1944) [C] ING

Aventure malgache (1944) [C] ING

Lifeboat (1944)

8 = **Spellbound (1945)**

Watchtower Over Tomorrow (1945) (uncredited)

Notorious (1946)  
The Paradine Case (1947)  
9 = **Rope (1948)**



Under Capricorn (1949)

10 = **Strangers on a Train (1951)**

11 = **I Confess (1953)**

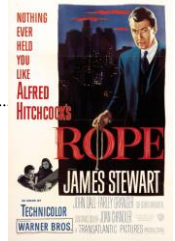
13 = **Dial M for Murder (1954)**

12 = **Rear Window (1954)**

To Catch a Thief (1955)

14 = **The Trouble with Harry (1955)**

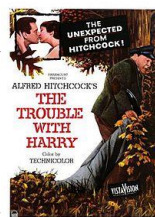
15 = **The Man Who Knew Too Much (1956)** 16 = **The Wrong Man (1956)**



17 = **Vertigo (1958)**

North by Northwest (1959)

18 = **Psycho (1960)**



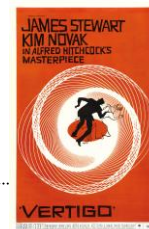
19 = **The Birds (1963)**

20 = **Marnie (1964)**



21 = **Torn Curtain (1966)**

22 = **Topaz (1969)**



23 = **Frenzy (1972)**

24 = **Family Plot (1976)**

