



Mostra Alfred Hitchcock

Milton José Biscaro Jr

ELCV – Santo André - 2016



Encontro 05

02 de julho de 2016

Rebecca

Rebecca (1940)



Rebecca, uma mulher inesquecível

Rebecas (1940) - 130min – EUA – PB

David O. Selznick






Oscar

 Melhor Filme





Edwina Levin MacDonald

"Blind Windows"



Elenco Principal





© FROM BOOK



Vivien Leigh ou Olivia de Havilland



Hitchcock Joan Fontaine

with
GEORGE SANDERS
JUDITH ANDERSON
GLADYS COOPER
and

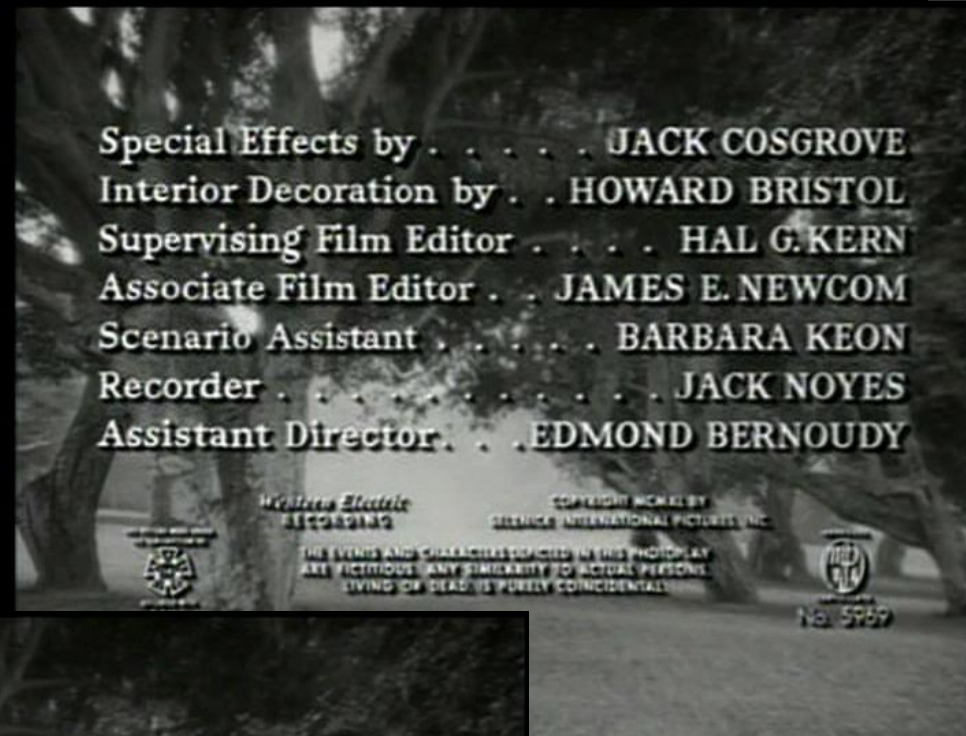
Mrs. Danvers

🎬 Desliza, não anda...

🎬 Não pisca



Equipe



Abertura: Cidadão Kane?





Manderley (maquete)



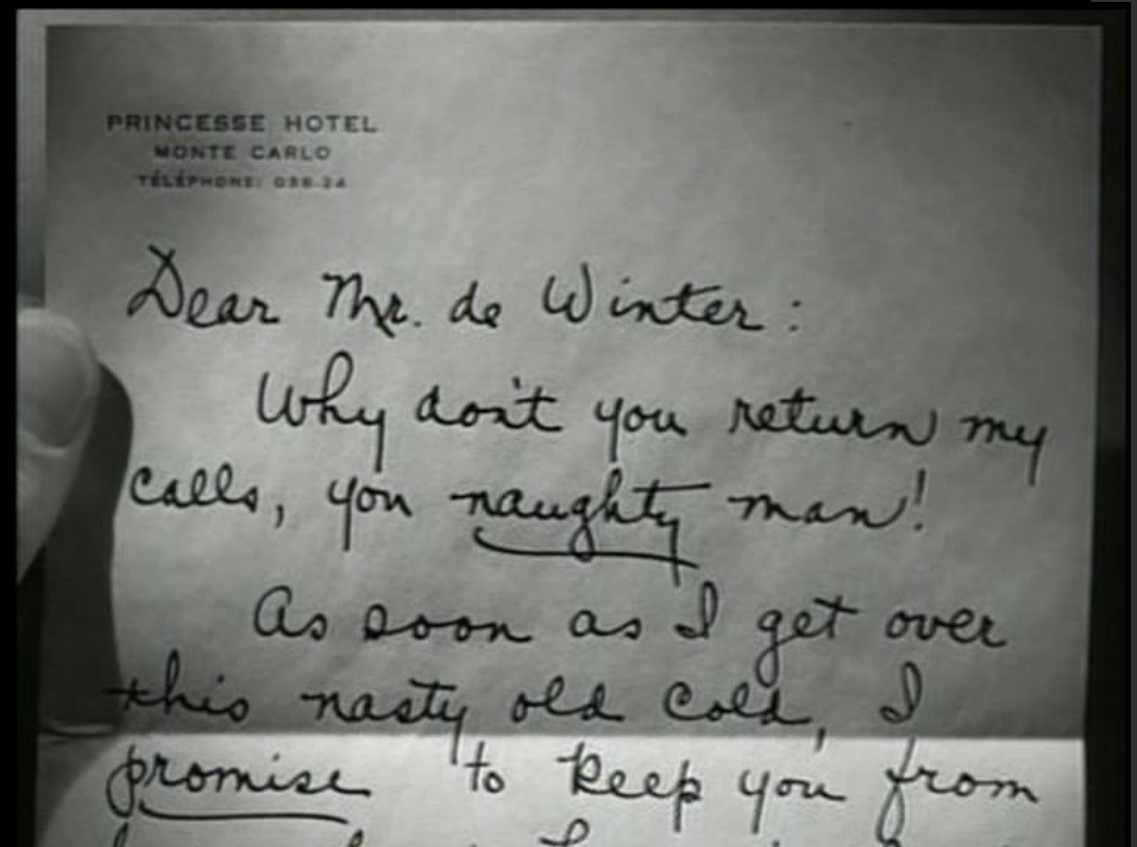


Mrs. Van Hooper (conflito 1)



Análise Caligráfica

- authoritative (large T bars)
- sexually stimulated (thick Y and F loops)
- obsessive (loopholes in E and N)
- unwilling to being commanded (Independence loophole in P)
- rude (thick tracks in general).



Back Projection



Resolução 1



A caminho de Manderley, chuva



Manderley, inadequação

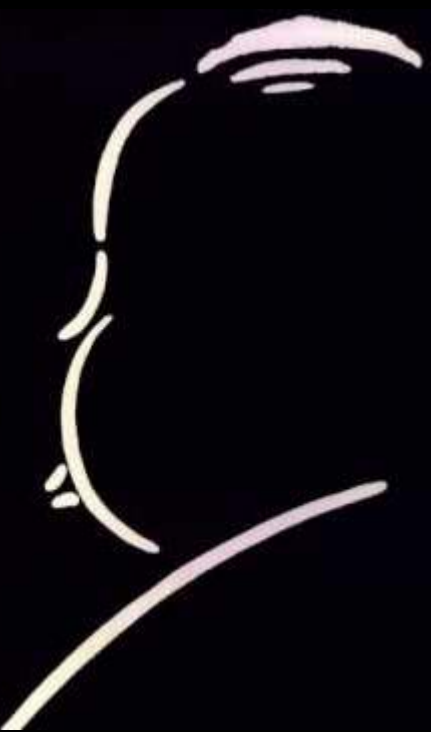


Conflito 2



Fantasma





Rebecca de Winter

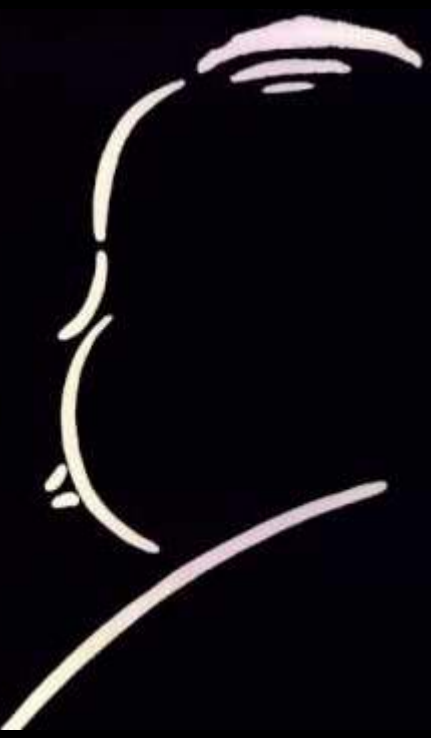


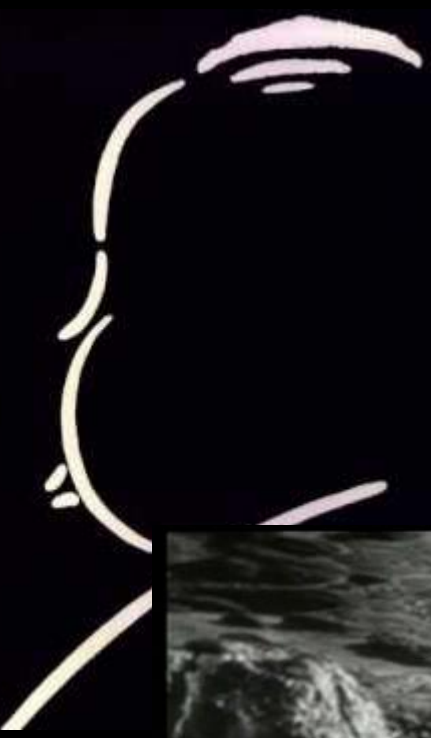
Grua



Solidão

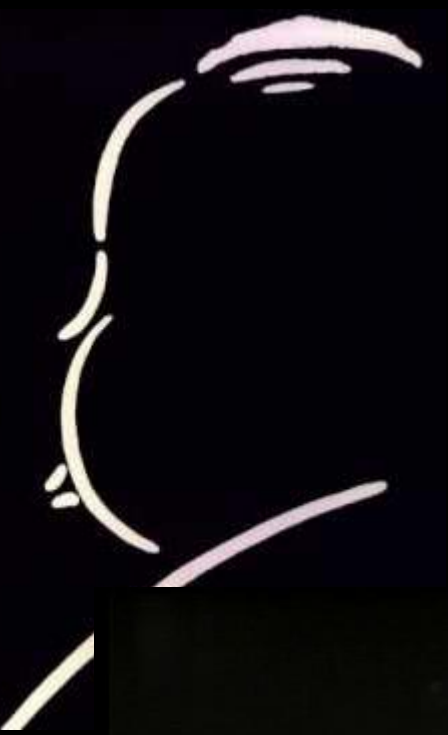






Novo vestido

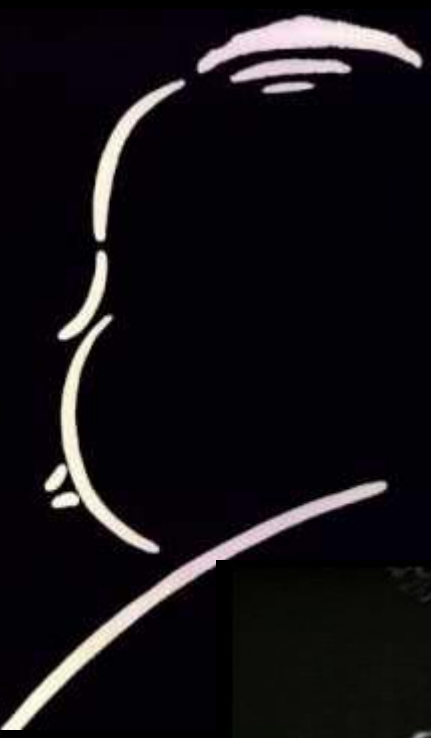


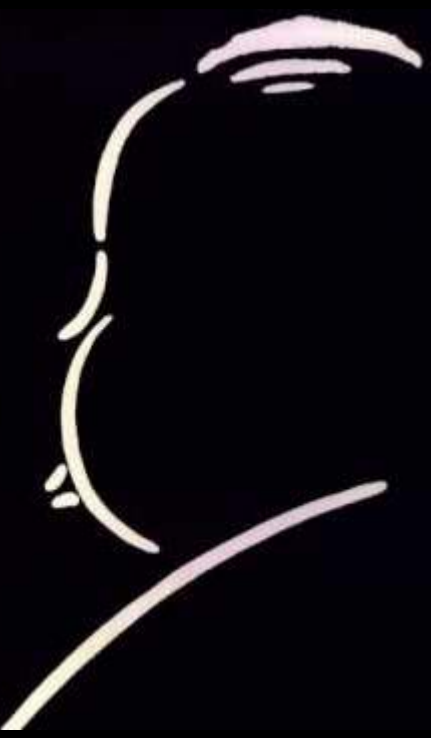




Mistério







Caligrafia 2

Have gone up to London
on some business of the
estate.

I shall return before
evening, and certainly
this brief holiday from
me should be welcome.

Maxim

Maxim is very reflexive (large inter-word spacing), reserved (large inter-line spacing) and self-underrated (T bars very low). -Favell is self-overrated, brutal and impulsive (big R, Brutality loophole, short inter-word spacing). (According to the Marchesan Handwriting Analysis Method).

Conflito 3



Resolução 2



Enfrentamento



Heroína



O Grande Baile



Conflito 3 Rebbeca



Assassinato psicológico



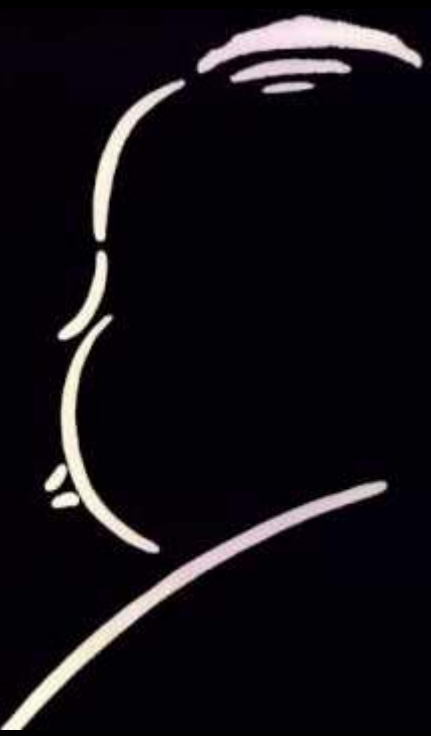


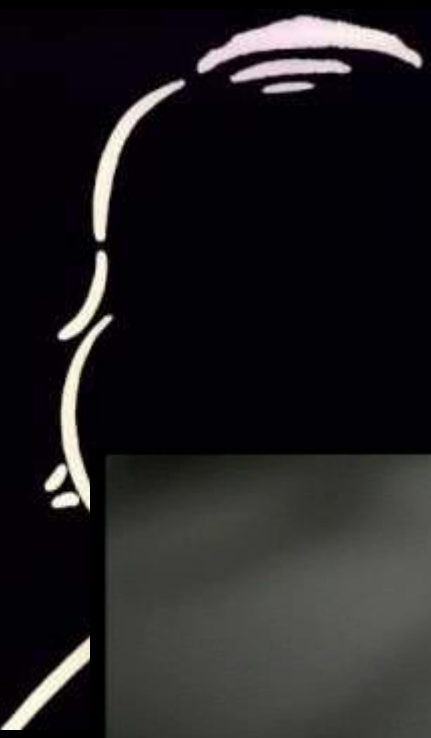
Confissão

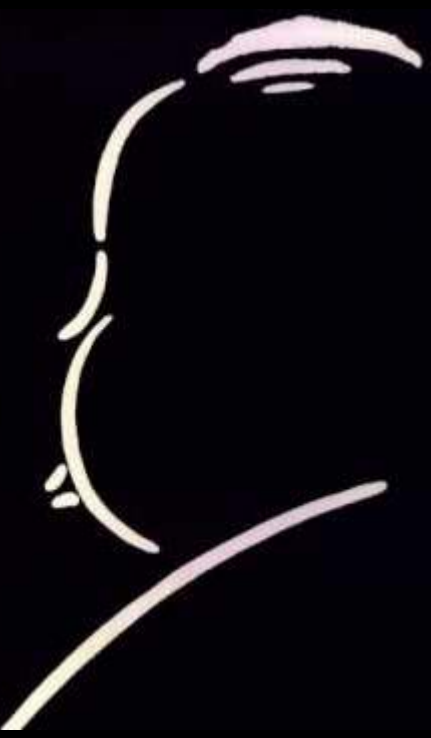


Julgamento









Chantagem





Cameo

